

Introduction

Thank you for purchasing the **USB 2.0 SVGA Adapter**. The USB 2.0 SVGA Adapter enables you to connect any monitor, LCD, or projector to your PC or notebook. You can use it as an extended desktop or as a larger/different display from your main screen. By using USB 2.0 technology, there is no need to open the computer or struggle with compatibility issues related to a second VGA card.

What are the benefits and uses?

Office workstation:

- View your large spreadsheets across two screens with display continuity
- Multitask more effectively without overlapping windows
- Open attachments on one screen while reading the e-mail on the other

On the road:

- Do multiple screen displays and presentations without bringing another computer

Graphics workstation:

- Use second display for palettes/tools

Editing workstation:

- Type documents on one screen while viewing reference material on the other

Wall Street:

- Use a notebook for viewing multiple screens
- View charts and live data at the same time

Entertainment:

- View videos/TV on one screen and reviews on the other

How will **YOU** use it?

System Requirements

- ⊙ Available USB 2.0 port
- ⊙ Windows 2000/XP operating system.

Package Contents

- ⊙ USB 2.0 SVGA Adapter x 1
- ⊙ Driver/Manual CD x 1

Quick Installation

Follow these steps to quickly install your new adapter:

NOTE: Do not plug the adapter into the system before the driver is finished installing.

1. Insert the driver/manual CD and follow the instructions
2. Please press '**Continue Anyway**' when Windows requests
3. Make sure to restart the computer as instructed
4. Turn on your second monitor and connect it to the adapter
5. Plug the adapter into an available **USB 2.0 port**
6. When the new hardware wizard appears, follow the instructions
7. Please press '**Continue Anyway**' when Windows requests
8. After complete, you should see the extended display on the second monitor

See **Frequently Asked Questions** and **Troubleshooting Tips** for additional help.

Display Utility

After the driver is installed, a utility will appear in the lower right taskbar (next to clock). This utility allows you to quickly change the settings and resolution for your USB 2.0 SVGA Adapter. Access the menu by right clicking on the icon.

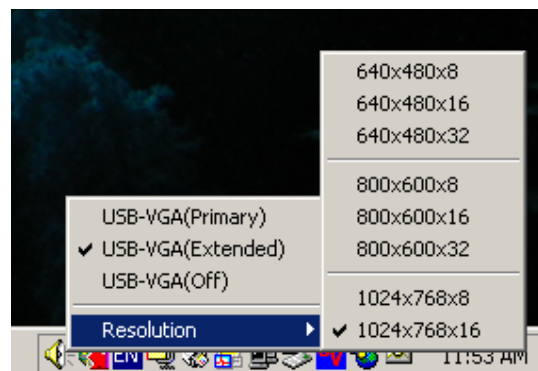


USB-VGA (Primary)

Make the **USB 2.0 SVGA Adapter** the main display adapter in the system. The system's main display adapter (and monitor) will automatically switch to being the secondary display adapter and act as the extended desktop. **Note:** Some display utilities and drivers that ship with AGP and built-in display adapters will prevent this option from working on some systems. You can disable the other utility (usually found in the same toolbar located on the bottom right hand corner) to make this function work properly.

USB-VGA (Extended)

By default, your USB 2.0 SVGA Adapter will extend your Windows desktop. Use this to add additional space on your Windows desktop to keep applications in view while you work. Gaming and



certain other applications may not work on the extended desktop, as they are not written to support this. You must run these applications on the main display. You can change the relative position of this extension under the **Display Properties**. See instructions located later in the manual.

USB-VGA (Off)

This option enables and disables the USB 2.0 SVGA Adapter on the system. You may still need to power off your monitor manually.

Resolution

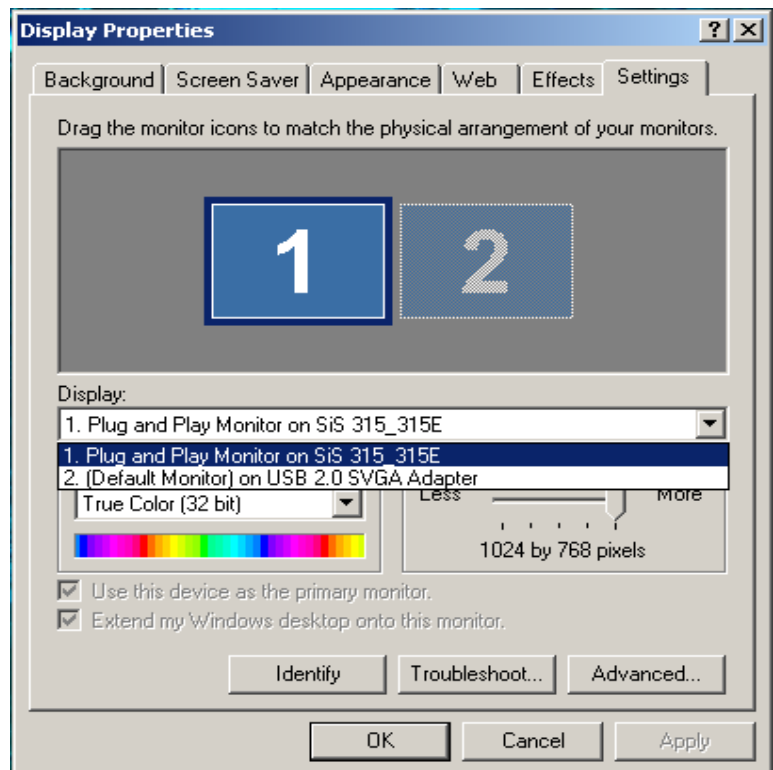
You can quickly change the USB 2.0 SVGA Adapter’s resolution and color depth here.

Resolutions that are supported:

Resolution	Color Bits
1024x768	8,16
800x600	8,16,32
640x480	8,16,32

USB 2.0 SVGA Adapter Properties

To access the Display Properties for the USB 2.0 SVGA Adapter, go to “Control Panel” and double click on the “Display” icon. Select the “Settings” tab. Click on the “Display” pull down menu and select “USB 2.0 SVGA Adapter”. From here, you can change the relative position, resolution and color depth as desired. Click “OK” to apply the settings. You can also make these changes using the USB 2.0 SVGA Adapter utility.



Virtual Repositioning Your Displays

On the Settings tab of your Display Properties, click and drag the appropriate monitor icon (labeled 1 or 2) to the desired position. For example, the secondary display can be dragged to the left of the primary display, allowing it to be virtually on the left. Click **OK** or **Apply** to save the changes.

Using Your Extended Desktop

Having a second display act as an extended desktop adds productivity. Organize your opened applications and windows to use the newly available space. Keep applications such as e-mail, instant messaging and stock tickers that update regularly opened on your second display so you never miss an update due to the application being behind other windows or minimized. To use your extend workspace, simply drag and drop your opened windows over to your second monitor. Most applications will remember where they were last so the next time you open the application, it will appear in the same place. Have the open e-mail or attachments appear on unused desktop space instead of over each other. Here are some other uses:

Office workstation:

- View your large spreadsheets across two screens with display continuity
- Multitask more effectively without overlapping windows
- Open attachments on one screen while reading the e-mail on the other

Graphics workstation:

- Use second display for palettes/tools

Editing workstation:

- Type documents on one screen while viewing reference material on the other

Wall Street:

- Use a notebook for viewing multiple screens
- View charts and live data at the same time

Entertainment:

- View videos/TV on one screen and reviews on the other

Frequently Asked Questions (FAQ)

Q: Why can I not make the USB 2.0 SVGA Adapter the primary display?

A: Some video cards ship their product with a utility that prevent other video cards from being set as the primary card. Check the bottom right hand corner taskbar for the utility. Disable the utility before switching our adapter to be the primary display.

Q: Why will my DVD player application not work when I move the window over to the extended display?

A: Some DVD playback software packages do not support playing on a second display adapter of any kind.

Q: How come my video will not play on Media Player if I move it over to the extended desktop?

A: Check that you have moved the Media Player window completely over to the second screen.

Q: Why is Windows asking to install the device driver again?

A: Windows treats each USB 2.0 port as a separate "device". If you have moved your adapter to another USB 2.0 port, it will install the driver for that port.

Q: Why does my mouse not move pass the right side of the screen as it should on extended desktop?

A: Check the display settings and make sure that your display number '2' is on the right side of display number '1'. You can rearrange how Windows treats each display in relation to each other in the Display Properties → Settings.

Q: There are lines running horizontally up and down my screen.

A: This is due to a low refresh rate setting. You can change this in the Display Properties → Settings → Advanced → Monitor. Make sure you select the USB 2.0 VGA Device first and not set the refresh rate higher than what your monitor can support. This may damage your monitor. You can also try to reset/refresh/resynchronize your monitor.

Q: Direct3D does not work?

A: This is a current limitation of the adapter. Please check for driver updates in the future to add support for this. If your application requires this, please use the main display adapter.

Troubleshooting Tips

The following troubleshooting tips may help if you are experiencing any issues. Contact your dealer for additional help if needed.

- Check to make sure that all connectors are plugged in correctly.
- Make sure that the USB port that you are using is USB 2.0.
- Check to see that the monitor is connected correctly and the power is ON.
- Try connecting the adapter directly to the computer instead of through a hub.
- Unplug all other USB devices from the system.
- Make sure you restart your computer after the driver installation.
- Unplug the adapter and re-insert it.
- Try a different USB 2.0 port and/or computer
- Check the website to make sure you have the latest drivers.
- Reset/refresh/resynchronize your monitor.
- If you have problems during the boot up process, start your computer in Safe Mode and uninstall the driver. Hold the CTRL key until the Windows startup menu appears and select Safe Mode.

Copyright© 2004

All other company and/or products names are trademarks and/or registered trademarks of their respective owners. Features, performance and specifications are subject to change without notice. Product may not be exactly as shown in the diagrams.